

Shown below is our selection of glass, tumbled natural stone & riverstone pebble mosaic options available for use in any of our mesh-mounted borders or murals - these are not available loose or for individual sale

🐾 DOG PAW DENOTES LARGER SIZES AVAILABLE UPON REQUEST 🐾

PUDDLES

A BLEND OF CLEAR AND FROSTED MULTI-SIZED GLASS CIRCLE MOSAICS



RAINDROP 🐾



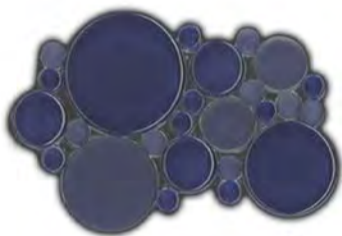
SNOWFLAKES



SUNSHOWER



MIST 🐾



DEEP OCEAN 🐾

SNOWDROPS

A BLEND OF CLEAR AND FROSTED IRREGULAR SHAPED GLASS * ONLY AVAILABLE IN SNOWFLAKE COLOR



CURRENTS

CLEAR OVAL GLASS MOSAICS



LIGHT CURRENT



MEDIUM CURRENT



DARK CURRENT

ICE CRYSTALS

COMBINING OUR HANDMADE MOSAICS WITH CRUSHED RECYCLED GLASS, CREATING A SHIMMERING, CRYSTALLINE EFFECT

*NOT SUITABLE FOR FLOOR APPLICATIONS OR AREAS WHERE FREEZE/THAW WILL OCCUR.



MOONSTONE



HOWLITE



OPAL



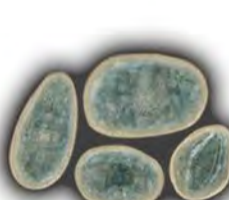
SERPENTINE



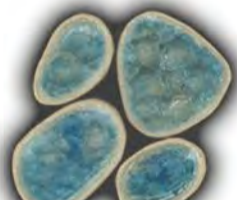
CELESTITE



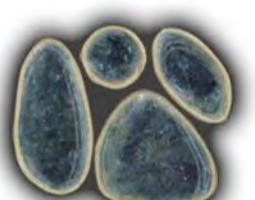
MALACHITE



LARIMAR



AQUAMARINE



LABRADORITE

SEA STONES

SPECIALTY STONES, TUMBLED TO CREATE IRREGULAR SHAPES & SIZES



BLUE



GREEN

SKIPPING STONES

TUMBLED NATURAL STONES IN IRREGULAR SHAPES & SIZES



GLACIER 🐾



BLUFF 🐾



LEDGE 🐾



SHALE 🐾



QUARTZ 🐾

PEBBLES

NATURAL STONES COLLECTED FROM BEACHES AND RIVERS



COBBLE 🐾



BOULDER BEIGE 🐾



ORE



GRAVEL GREEN 🐾



RUBBLE



RIVERBED

SLICED PEBBLES

NATURAL STONES COLLECTED FROM BEACHES AND RIVERS - WITH TOP EDGE GROUND FLAT



SLICED GRAVEL GREEN 🐾

PILED PEBBLES

NATURAL STONES COLLECTED FROM BEACHES AND RIVERS - CUT AND LAID ON EDGE



PILED RUBBLE



PILED COBBLE



PILED BOULDER BEIGE

* The color swatches shown on this palette are not guaranteed to match the final piece. Due to the inherent nature of natural stone, every piece will be unique in size, shape, thickness, texture, color, and shade. Due to the inherent nature of glass each dye lot may vary slightly in color and shade.

A collection of neutral glazes that can be specified for any of our "Friends" or "Wet Dog Minis".
Please read descriptions for an overview of characteristics and feel free to call or e-mail anytime for artist recommendations or to order a current sample swatch



Wagging White

Glossy bright white with subtle creamy undertones in raised areas. Solid/even in color.



Woof White

Glossy milky white with soft beige undertone.



Pearl's White

Glossy transparent white with subtle crackling and cool white where glaze pools.



Ice Storm

Matte white with soft and subtle crystal effect as glaze pools. Mostly even/solid.



Chappy

Very coarse matte finish white/cream crackle. Glaze separates from clay body in areas. Not suitable for high traffic areas.



Mr. Mailman

Matte white with beige flecks. Heavy glaze, not recommended for finely detailed pieces.



Otis' Oatmeal

Glossy cream with subtle milky white highlight in areas where glaze pools.



Wheaten

Matte soft beige with very soft golden undertone.



Cali Cream

Glossy cream with blue and green highlights. Extreme variation to be expected.



Corgi Cream

Glossy crackle cream with taupe highlights in areas where glaze pools.



Bailey's Cream

Glossy beige/brown. Brown and cream crystals in areas where glaze pools. Extreme variation to be expected.



Scooby Snacks

Glossy beige and green with chocolate brown highlighting carved details. Works well with finely detailed pieces.



Best In Show

Glossy cool white with chocolate brown highlighting carved details. Works well with finely detailed pieces.



Waffles

Matte finish overall but glossy beige highlights in areas where glaze falls. Works well with finely detailed pieces.



Benji Brown

Glossy beige and blue with chocolate brown highlighting carved details. Works well with finely detailed pieces.



Coyote

Glossy, cool grey with subtle blue flecks.



Dog Tag

Soft semi-transparent, glossy cool grey,



Squirrels

Matte two-toned grey. Unique spotting/crazing effect displaying light and dark grays. Soft beige undertone.



Blue Merle

Satin warm grey with creamy undertones.



Tub Time

Glossy blue/grey with subtle undertones of gold. Extreme variation to be expected.



Wolfhound

Dark, warm grey with pale milky grey/blue highlights where glaze pools



Spiked Collar

Glossy metallic grey, green, black and brown swirls and specs. Extreme variation to be expected.



Harry Heron

Satin cool grey with subtle tonal variations.



Weimaraner

Matte medium blue/grey, with occasional blue green striations.



Arctic Husky

Matte finish ranging from medium cool grey to soft blue/grey.



Cold Wet Nose

Glossy black. Semi solid/even in color.



Buster Brown

Glossy mocha brown with spotted milky pools. Quantity and size of spots will vary.



Phil the Brindle

Glossy brown with golden green spots/swirls. Extreme variation to be expected.



Duck Hunt

Glossy dark brown with turquoise highlight in areas glaze pools. Extreme variation to be expected.

* The color swatches shown on this palette are not guaranteed to match final piece. Due to the inherent nature of our artisan glazes, combined with the dimensionality of our "Friends", each glaze has unique characteristics. While we try to provide a detailed description of each glaze's appearance, please expect variation in both color and shade. Control samples may be ordered and sent back for reference for greater accuracy.

WET DOG TILE CO

COOL GLAZES

A collection of cool-toned glazes that can be specified for any of our "Friends" or "Wet Dog Minis". Please read descriptions for an overview of characteristics and feel free to call or e-mail anytime for artist recommendations or to order a current sample swatch.



Lichen

Glossy, pale green with minty crystals and soft grey flecks at random. Extreme variation to be expected.



Shasta's Field

Glossy multi-toned green with grey and plum crystals. Variation to be expected.



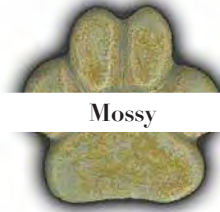
Off the Couch

Glossy multi-toned golden-green with turquoise highlights. Heavy glaze that is not recommended for finely detailed pieces.



Take me on a walk

Glossy soft green with small dark grey/green crystals appearing at random. Variation to be expected.



Mossy

Satin multi-toned green with light green crystals. Variation to be expected.



Frisbee

Glossy, semi-solid, medium, milky green. Variation to be expected.



Rin Tin

Uneven semi-metallic green. Extreme variation to be expected.



Yippy's Yard

Glossy, solid medium green. Heavy glaze that is not recommended for finely detailed pieces.



Peeled Paint

Very Coarse matte finish green crackle. Glaze separates from clay body in areas. Not suitable for high traffic areas.



Dog Park

Glossy, multi-toned medium and dark green. Extreme variation to be expected.



Clover

Very glossy dark green. Semi solid/even in color.



I Dream of Kitty

Matte finish medium turquoise green. Semi-solid/even in color.



Dew Claw

Glossy sea glass blue. Solid/even in color.



I Dig Green

Glossy, solid dark green. Heavy glaze that is not recommended for finely detailed pieces.



Reef

Glossy brown/green with milky turquoise highlights.



Tripod Teal

Glossy, soft metallic aqua blue/green. Golden undertones with lighter crystals. Not recommended for finely detailed pieces.



Pick-up Truck

Very coarse matte finish blue/green crackle. Glaze separates from clay body in areas. Not suitable for high traffic areas.



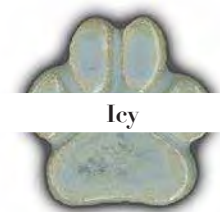
Blizzard Blue

Glossy and semi-transparent light blue.



Fetching

Glossy medium turquoise/blue. Lighter, milky pools of glaze as well as a subtle black or gold fleck.



Icy

Glossy soft blue with creamy golden undertones, and blue crystals in areas where glaze pools. Extreme variation to be expected.



Sky

Rich powder blue, with beige highlights in raised areas. Heavy glaze, not recommended for finely detailed pieces.



Fido's Filigree

Glossy light blue with lavender undertones. Soft green crystals in areas where glaze pools.



Beach Ball Blue

Soft satin blue, ranging in opacity.



Chien Blue

Solid 'wedgewood' blue, with subtle light cream highlights. Heavy glaze that is not recommended for finely detailed pieces.



Luau Lavender

Soft glossy semi-transparent lavender shade of purple.



Shake it Out

Semi-transparent glossy aqua blue.



Doggy Paddle

Glossy chocolate brown with spotted pools of blue/turquoise. Quantity and size of spots will vary.



Argos Teal

Semi-transparent rich blue-teal, heavy where glaze pools, slight cream in raised areas.



Splish Splash

Matte finish antique blue. Faded blue with beige undertone. Variation to be expected.



Rip Tide

Glossy semi-transparent medium toned blue.



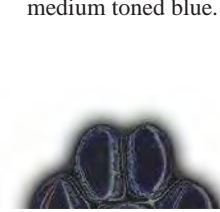
Cerberus Blue

Rich, deep blue laced with metallic striations of dark & light blue tones. Heavy glaze not recommended for highly detailed pieces.



Good Boy Blue

Glossy medium blue with lighter shades in areas where glaze pools. Some crazing/spotting. Extreme variation to be expected.



Cane Corso Cobalt

Deep, true "cobalt" blue. Some clay body shows through in raised areas. Not recommended for highly detailed pieces.



Oh' Sprinkler

Glossy dark royal blue with brighter shades where glaze pools, and darker greenish toned highlights.

* The color swatches shown on this palette are not guaranteed to match final piece. Due to the inherent nature of our artisan glazes, combined with the dimensionality of our "Friends", each glaze has unique characteristics. While we try to provide a detailed description of each glaze's appearance, please expect variation in both color and shade. Control samples may be ordered and sent back for reference for greater accuracy.

A collection of warm-toned glazes that can be specified for any of our "Friends" or "Wet Dog Minis". Please read descriptions for an overview of characteristics and feel free to call or e-mail anytime for artist recommendations or to order a current sample swatch.



Ruff Red

Glossy red, mostly solid/even in color.



Fire Hydrant

Matte red. Solid/even in color. Can be sponged off larger pieces such as the lobster to create highlights per request.



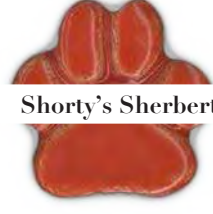
Orange Ya Gonna Play

Glossy Orange. Solid/even in color.



Unleashed

Two-tone glaze with a dark metallic grey undertone and a glossy orange spotting effect on top. Extremely varied.



Shorty's Sherbert

Glossy red-orange, Mostly solid/even in color.



Pretty Pitty

Glossy dark coral. Solid/even in color.



Moe Berry Bush

Glossy, deep pink with subtle purple flecks.



Poodle Pink

Mostly matte, but with lighter glossy/metallic highlights of pink.



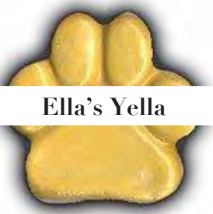
Pip's Peach

Glossy soft peach, semi-transparent showing some of the cream clay body.



Yellow Snow

Matte soft yellow, solid/even in color. Heavy glaze. Not recommended for finely detailed pieces.



Ella's Yella

Low gloss yellow. Solid/even in color. Heavy glaze. Not recommended for finely detailed pieces.



Old Yeller

Matte finish multi yellow and gold tones. Soft rustic golden patina affect. Variation to be expected.



Sun Dog

Rich golden-yellow with creamy areas where glaze pools.



She's a Ginger

Matte finish gold with crazing/spots of browns and light gold. Extreme variation to be expected.



Lexy Lou

Glossy golden beige/brown. Golden blue crystals in areas where glaze pools. Extreme variation to be expected.



Cat Food

Matte finish rusty gold with soft gold patches, creating a rustic/old world effect.



Peanut Butter

Glossy brown with swirling crystals and chocolate brown highlighting carved details. Works well with finely detailed pieces.



Big Moe Brown

Glossy rust brown with soft milky purple highlights in areas where glaze pools.



Snausages

Low gloss maroon. Solid/even in color.



Fox & Brown

Glossy rust brown with soft gold highlights in areas where glaze pools. Extreme variation to be expected.



Shaggy

Glossy deep brown/maroon with highlights of gold in areas where glaze pools. Extreme variation to be expected.



Mud & Grass

Glossy rust brown with green highlights in areas where glaze pools. Extreme variation to be expected.



Chocolate Lab

Matte chocolate brown. Semi solid/even in color.



Buck's Brown

Glossy brown with cream highlights in areas where glaze pools. Heavy glaze, not recommended for finely detailed pieces.



Leather Leash

Matte chocolate brown with black highlighting carved details. Works well with finely detailed pieces.

* The color swatches shown on this palette are not guaranteed to match final piece. Due to the inherent nature of our artisan glazes, combined with the dimensionality of our "Friends", each glaze has unique characteristics. While we try to provide a detailed description of each glaze's appearance, please expect variation in both color and shade. Control samples may be ordered and sent back for reference for greater accuracy.

Our selection of hand cut and hand pressed stoneware mosaics which add unique texture and character to any of our mesh-mounted borders or murals. These can be glazed in any of our available glazes (see our glaze palettes for available options).



KELP 🐾

(SHOWN IN OTIS' OATMEAL)



FERNS

(SHOWN IN LICHEN)



GRASS

(SHOWN IN LICHEN)



DROPS 🐾

(SHOWN IN WOOF WHITE)



FLURRIES

(SHOWN IN WHITES BLEND)



MINI SHELLS

(SHOWN IN MIX OF OTIS' OATMEAL & WOOF WHITE)



ROUNDS 🐾

(SHOWN IN WOOF WHITE)



MINI LEAVES

(SHOWN IN MIX OF OTIS' OATMEAL & WOOF WHITE)

🐾 DOG PAW DENOTES LARGER SIZES AVAILABLE UPON REQUEST 🐾

The swatches shown on this palette are meant to be an example of the finished look, but please expect variation in both size and texture, especially on the hand cut pieces such as Kelp, Ferns, and Grass.

www.wetdogtile.com

Wet Dog Minis are only available as part of a mesh-mounted border or mural, they are not available loose or for sale individually.